

MUWG SPRING CONFERENCE

ALLEN, TX

MARCH 31 - APRIL 3



2
0
2
5



MUWG
MAXIMO UTILITY WORKING GROUP

**MAXIMO AND THE
IMPORTANCE OF
MANAGING,
MAINTAINING &
MIGRATING**

Hosted By:



**NORTH
TEXAS
MUNICIPAL
WATER
DISTRICT**

CONTENTS

| | |
|---|----------|
| Pre-Conference Activities - Monday, March 31 | 3 |
| IBM Demo Room | 4 |
| Day 1 - Tuesday, April 1 | |
| General Sessions | 5 |
| Kickoff Sessions | 6 |
| Afternoon 1 Breakout Sessions | 7 |
| Afternoon 2 Breakout Sessions | 9 |
| Day 2 - Wednesday, April 2 | |
| General Sessions | 12 |
| Morning Breakout Sessions | 13 |
| Afternoon 1 Breakout Sessions | 15 |
| Afternoon 2 Breakout Sessions | 17 |
| Day 3 - Thursday, April 3 | |
| Training & Certification Programs | 20 |
| Partner Meetings | 20 |

WELCOME

On behalf of the MUWG Management Committee, Hello and Welcome back to Allen!

As we embark on our twenty-eighth year of service to the Maximo community, we'd like to thank you for your attendance and support. MUWG continues to be a leading resource for Maximo users in the utility industry and beyond. With each passing conference, we seek to provide for you an experience that drives business value while staying true to our mission to provide a forum for utility members to exchange information, methods, and experiences related to Maximo.

The surroundings for this spring's conference may be familiar to you as we visited here just a short two years ago. This year, we return with a new conference host, North Texas Municipal Water District, which demonstrates the diverse collective of Maximo utility users in north Texas. To the employees of North Texas Municipal Water District, thank you for hosting the spring conference.

Each spring and fall, our committees work diligently to deliver a conference second to none in the Maximo community. Our aim is always to exceed your expectations. Our conferences are designed to deliver current, experiential learning opportunities that drive business value for the organizations that attend. Each of you has a story to tell & we encourage you to tell it here. Please consider offering a presentation at one of our conferences.

Over the years, there have been many that have supported this organization in a variety of ways. Thank you to our Sponsors, IBM, the MUWG Board of Directors, MUWG Administration, and especially, the MUWG Management Committee. None of this would be possible without all of us working together. Please, enjoy the conference, learn something new, connect with old friends, and **"GET OUT THERE AND NETWORK!"**

- George Perry
MUWG Committee Chair

PRE-CONFERENCE ACTIVITIES

MONDAY, MARCH 31

IBM Maximo Location Based Service Development Partner Meeting

9:00a-11:00a | Registration Required

- To attend, please email Thiago Geraldi tgeraldi@ibm.com

Preconference Networking Event - Puttery

10:30a-2:30p | Meet in Marriott Lobby for motorcoach transportation to event.

\$75 per person &
registration required



Puttery is a modern spin on putting, redefining the game with unique twists at every hole. It's an immersive experience that offers friendly competition, socializing, upscale food, craft cocktails, and great music. Whether you play or don't play, this is where you can come for an un"fore"gettable time. Check out all the fun at puttery.com!

Come enjoy fun and games with your fellow MUWG attendees!

Pricing includes food & drink, unlimited 9-hole round of golf, & chartered transportation.

When you register, you will receive an invoice link to pay for your outing separate from your conference registration.

Event
Sponsor:



MAXTech IT User Group Meeting

2:30p-4:30p | Registration Required

- Please [RSVP Here](#) to attend.

MUWG First Timers Orientation

4:30p-5:00p

- Join us to learn how to get the most out of our conference!

Using Guidebook - MUWG Conference Mobile App

5:00p-5:30p

- Learn how to download and navigate MUWG Conference Mobile App.

Conference Registration & Welcome Reception

5:30p - 8:00p

- Welcome to Allen!** Check in for the Conference to receive badge and welcome gift. Then, join us for cocktails, light bites & live music.

Hospitality Night Independently Sponsored by:



Music Sponsor:



IBM DEMO ROOM

The demo room provides an open forum for your questions with answers from IBM Experts. There are no scheduled presentations, but please bring your questions during the hours below for each subject.

TUESDAY, APR 1

1:00p - 2:15p

**Maximo Manage Supply Chain
Maximo Mobile - Inventory applications**
Thomas Knowles

2:45p - 4:00p

Maximo Scheduler
Pedro Spadacini

WEDNESDAY, APR 2

10:45a - 12:00p

**Maximo for Nuclear Power and Power Generation
Maximo for Utilities (T&D)
Maximo Spatial**
Derek Valine, Bill Weaver, Jeff McGarry

1:00p - 2:15p

**Maximo Manage Work and Asset Management
Maximo Mobile - Work Orders, Inspections, Service
Requests
Maximo Monitor and Health**
Scott Bryden, Rick Hatheway, Matt Lister

2:45p - 4:00p

**Maximo Health, Safety & Environment
Reliability Strategies**
Bill Weaver, Francisco Coelho, Derek Valine

GENERAL SESSIONS

BREAKFAST SPONSOR

IBM TechXchange

7:00a-8:00a

**Final Conference Registration
Continental Breakfast**

8:00a-8:30a

George Perry
NYPA



Opening Remarks

- Introductions
- MUWG Business Updates
- Agenda Updates

8:30a-9:00a

Jenna Covington
Executive
Director /
General Manager
NTMWD



North Texas Municipal Water District (NTMWD) Keynote Presentation

Scaling Up – Delivering Essential Services for a Rapidly Growing Region

Hear how the North Texas Municipal Water District is delivering on its vital mission to provide high-quality and dependable water, wastewater, and solid waste services for one of the fastest-growing areas of the United States and how the District supports its critical infrastructure operations through the Maximo platform.

9:00a-9:30a

Taylor Prentice
Director of
Information
Technology



NTMWD Road to Maximo MAS 9 Implementation

A strategic approach to enhancing business processes through effective governance, leveraging technology, and overcoming challenges in the Maximo environment. Key discussions include the formation of a Steering Committee to govern changes based on business needs, particularly in improving efficiency through Maximo. This session will highlight the importance of continual improvements and share notable learnings regarding several recent projects, including move to App Points and 7.6.1.3 as we prepared to move to MAS 9, which will further enable key initiatives.

9:30a-10:00a

Stan Smith
IBM Program
Director, Maximo
Product Mgt



IBM Maximo App Suite - Product Update & Roadmap Overview

Maximo Application Suite continues to evolve with an expanding focus to cover asset lifecycle and performance management. This summary session will talk about recent updates and our plans going forward for all aspects of asset management including monitoring, mobility, scheduling, AI, sustainability, industry driven functionality, and modernization. This session will be covered in detail in the afternoon breakout session with time there for Q&A.

10:15a-10:45a

MORNING BREAK
NETWORKING & LIGHT
REFRESHMENTS PROVIDED

KICKOFF SESSIONS

10:45a-12:00p

Kickoff sessions are an opportunity to meet and network with other attendees that are interested in the same session categories. These sessions typically include introductions, conversation on session category topics and facilitated discussion by MUWG Committee Members.

MUWG SESSION CATEGORIES



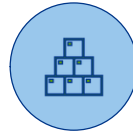
Power Generation



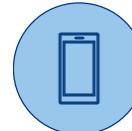
Transmission & Distribution



Water / Wastewater & Pipelines



Supply Chain



Mobility



Information Technology



*General



*Management / Manager



*Transportation / Fleet



*Maximo 101

*Kickoff session not offered Spring 2025

12:00p-1:00p

LUNCH

A plated lunch to promote discussion among attendees.

LUNCH SPONSOR:

PragmaEdge

DOWNLOAD THE GUIDEBOOK APP



- **Locations of Sessions**
- Build your Conference Schedule
- **Connect with Attendees & Exhibitors/Vendors**
- Access Agenda & Presentations
- **Complete Overall Conference Evaluation**
- Add to Photo Album

AFTERNOON 1 SESSIONS



1:00p-2:15p

IBM Maximo Application Suite - Product Updates & Roadmap Deep Dive
Stan Smith & Team Members - IBM

Purpose: Innovating Maximo for tomorrow – an update on offerings and roadmap from IBM with interactive Q&A.

Content: Maximo Application Suite continues to evolve with an expanding focus to cover asset lifecycle and performance management. We have expanded our offerings and will continue to grow both capabilities and each of both deployment and management. This session will talk about recent updates and our plans going forward for all aspects of asset lifecycle and performance management including manage, monitor, mobility, scheduling, Reliability Strategies, Accelerators, Omnio Edge Connectors, AI, sustainability, industry driven functionality, and modernization.



1:00p-2:15p

Using Maximo HSE as a Safety Information Management System - Part 1: Visualizing the Business Functions of a Safety Department
David Milligan - NTMWD

Purpose: The North Texas Municipal Water District (NTMWD) Safety Department provides 6 unique business functions to support water, wastewater, and solid waste services across a 10-county service area. The Safety Department uses Maximo HSE to track and analyze work activities visually using Maximo HSE graphic displays as well as Power BI displays.

Content: This presentation will provide an overview of the NTMWD Safety Department's effort processing data into information for analysis and knowledge brokering. **See also: Part 2 - Breakout Session 26 - Wednesday 10:45a**



1:00p-2:15p

The Power of Data: Con Edison's Asset Management Journey
Shaun Ramkishun - Con Edison

Purpose: Con Edison is a utility that serves over 10 million customers in and around New York City with electricity, gas, and steam. Modern decision support and artificial intelligence (AI) tools require large amounts of high-quality data collected over a sustained period of time. Recognizing the desire to leverage data for decision support, Con Edison began their data transformation journey by implementing Maximo in 1998, and then in 2007 they updated their data collection and storage procedures.

Content: This presentation describes the challenges Con Edison faced along the way, the approach they took to facilitate AI-ready data management, and the data analytic tools they are developing and deploying to transform their decision making. This includes a wide range of AI systems that involve predictive machine learning models, combinatorial optimization systems, and generative AI writing support and synthesis capabilities. Key takeaways will be shared to help other companies facing similar challenges in data quality and AI readiness. Shaun will be assisted by Steven Hoffenson, Endeavor.



1:00p-2:15p

Upscale Your Asset Mobility Platform with Digital Inspections
Karl Bruening - Skookum

Purpose: Skookum maintains facility and utilities primarily at DoD installations. In today's fast-paced industrial landscape, effective asset management is crucial for operational efficiency and cost reduction. This presentation uncovers Skookum's approach to integrate digital inspections with mobility. Digital inspections streamline the process of monitoring equipment and reporting on asset condition. Digital inspections enhance data accuracy and actionable insights. By leveraging mobile technology, there is greater transparency, accountability, and accuracy aided by the ability to efficiently produce detailed reports and ensure compliance.

Content: This presentation will provide valuable insights for professionals seeking to modernize their asset management practices as part of their digital transformation journey. Key takeaways include: Enhanced Efficiency, Improved Data Accuracy and Increased Frontline Worker Satisfaction.

AFTERNOON 1 SESSIONS



1:00p-2:15p

Request for Quotes at GTC via a Procurement Portal
Ron Wilson - Georgia Transmission Company

Purpose: Georgia Transmission recently implemented the P2Insight Order Hub RFQ Portal and is using it to successfully and efficiently get quotes for parts and services. The Portal published their Maximo RFQ's for multiple Vendors to review & submit bids. Once the bids are submitted, there is an enhanced RFQ analysis and automated awarding function that quickly and efficiently selects the winning bids. Also, Buyers can quickly and efficiently get quotes for any and all Purchase Requisitions that they feel is necessary, or that corporate policy mandates, without jumping around multiple applications. They do it all in the PR application. They use it to get competitive quotes, but also to request a single vendor to confirm pricing and availability, before they cut a PO. The goal is to get more multi-vendor competitive bidding, and to reduce overall spend.

Content: This session will discuss the implementation, use and the efficiencies gained through the RFQ Portal. Ron will be assisted by Mike Popovic, P2Insight. functionality, and modernization.



1:00p-2:15p

Optimizing Investment in Critical Assets: A New Approach with IBM Intelligent Asset Investment Planning
Philippe Jette - IBM

Purpose: For utilities, optimizing investment in critical assets is essential for ensuring long-term reliability, safety, and affordability. Asset Investment Planning (AIP) solutions are designed to address this challenge, offering structured frameworks for investment decision-making, risk modelling, and plan optimization. However, a comprehensive set of AIP capabilities has not been integrated into the IBM Maximo Application Suite (MAS)—until now.

Content: Join us as we explore IBM Asset Investment Planning, a new solution launching with MAS 9.1. This session will introduce the fundamentals of AIP, discuss how the IBM solution sets itself apart in the market, and provide an overview of the end-to-end user experience.



1:00p-2:15p

The Work Order Lifecycle - A Practical View
George Perry - NYPA & Rick Ulrich - MUWG

Purpose: The Maximo 101 Track of presentations is designed for those attendees who are evaluating Maximo and Maximo applications, new to Maximo, or have very little experience with Maximo. These sessions are designed to offer high-level information on Maximo capability, uses for various Maximo modules, what is required to operate in specific Maximo modules, and the value provided by them.

Content: This interactive session will take a high-level look into the Lifecycle of a Work Order. We will look into the Maximo Work Order Tracking application, understand what is needed to properly plan and assign work, review the various statuses a work order can be in – what they mean – and when they should be used, and discuss where information comes from when it shows up on a Maximo work order and where that information goes or is updated when the work is complete. Lastly, we will discuss who is responsible to make sure that it all comes together to provide value to the business.

AFTERNOON 1 SESSIONS



1:00p-2:15p

Precisely My Dear Watson
Decimal precision in Maximo Automation Scripting
Aaron Robertson - Duquesne Light Co.

Purpose: Demonstrate common Maximo Automation Script issues with Python Calculations and Logical Operators.

Content: Review of Python default data types, specifically Floating-Point Operations. Demonstration of impact of Floating-Point Precision Bugs. Review pro's and con's of different solutions to bugs (MXMath library, rounding, etc.). Review of Python logical comparisons and approaches. Open Discussion and Idea Sharing



1:00p-2:15p

Using Maximo to Manage Facilities' Workspace Data
Tassie Justice - LCRA

Purpose: LCRA is now utilizing Maximo to manage and maintain our 2,000+ cubes, offices, and other employee workspace locations. Additionally, we built out a form and workflow process to manage the employee relocation process

Content: Come hear how centralizing our employee location and assignment information allowed us to streamline multiple business processes and was the critical first step to being able to visualize this data on a building model in the future.

2:15p-2:45p

AFTERNOON BREAK
NETWORKING & LIGHT
REFRESHMENTS PROVIDED

AFTERNOON 2 SESSIONS



2:45-4:00p

Cultivating a Relationship to Drive Maximo (MAS) Implementation Strategy and Success
Luke Peterson - Hibbing Public Utilities

Purpose: This presentation focuses on the impact of training and strategies for stabilizing operations post-implementation of the Maximo Application Suite (MAS). Rather than solely highlighting the implementation itself, the discussion centers on how tailored training programs and collaborative planning have helped to drive operational stability and to enhance asset management after go-live.

Content: This case study offers actionable insights into creating more resilient processes and maximizing the benefits of MAS implementations through strategic training and stabilization techniques. Luke will be assisted by Russ Mokrous, ABS Consulting.



2:45p-4:00p

Maximo Spatial in Action: Practical Use Case
Thiago Geraldi & Milton Gomes Vieira Neto - IBM

Purpose: Experience the full potential of Maximo Spatial in this dynamic session, showcasing the latest updates and features through a simulated use case. Participants will be guided through a practical scenario that highlights the diverse tools and capabilities of Maximo Spatial 9 on both platforms (Mobile and Desktop).

Content: This hands-on session will demonstrate key functionalities, including spatial data integration, advanced spatial analysis techniques, etc. Additionally, we will delve into the Indoors tool, exploring how it can be leveraged for facility-specific use cases, such as managing assets across multiple floors and enhancing navigation within buildings.

AFTERNOON 2 SESSIONS



2:45p-4:00p

Operational Dashboard and Work Queues UX in MAS 9.0
Jordan Smith - IBM

Purpose: The newer applications in Maximo focus on user experience and end-user personalization. The Operational Dashboard allows users to build multiple KPI-based dashboards using an intuitive drag-and-drop gallery. It also includes the new Work Queue functionality, helping you to personalize query tables and perform quick actions directly from the dashboard.

Content: This session will include a live demo of the Operational Dashboard and Work Queues in a live MAS 9 environment.



2:45p-4:00p

NYPA's Integrated Data Collection Approach
Serisha Boyett & Jake Stith - NYPA

Purpose: NYPA's Reliability Centered Maintenance (RCM) program was revised and updated in 2024. The principal changes are moving towards a committee approved asset class template strategy, defining maintenance frequencies, data collection, and asset health scoring for each templated asset.

Content: This presentation will discuss the steps taken that has allowed NYPA to collect data on key assets in a consistent manner and to be able to create health scores based on objective criteria and consistent data. In parallel, our mobile program is being upgraded to a system that integrates more seamlessly with Maximo to facilitate improved data collection from our field personnel, work order completion, and corrective maintenance creation. An RCM template is now being used as the basis for our mobile inspection forms which provides required inspection points, expected results, ranges, and alarm thresholds.



2:45p-4:00p

Supply Chain - "Ask the Experts" Question/Answer Open Forum
Destinie Prince - Oncor, Tammy Wayman - Southern Company & Lee Kader - Vistra

Purpose: Bring your Maximo Supply Chain questions to an open forum with other users and IBM.

Content: Users of Maximo will be able to ask questions and talk to other users of Maximo as well as IBM.



2:45p-4:00p

Reimagining the Future of Clean Energy Analytics with "IBM Maximo Renewables"
Kimi Kasuja - IBM

Purpose: The presentation aims to highlight the capabilities of IBM Maximo Renewables. Attendees will explore how IBM Maximo Renewables provides a robust Asset Performance Management (APM) solution for renewable assets such as solar, wind, and battery energy storage.

Content: The presentation will delve into advanced analytics and AI-driven insights offered by IBM Maximo Renewables. These capabilities empower enterprise operations with actionable intelligence, enabling organizations to remain competitive in the dynamic energy sector. Key topics include challenges faced by the renewable energy industry, pain points specific to personas - Asset Managers and Reliability Engineers, an introduction to Monitor, Analyze, and Operate modules, turbine diagnosis - Identify and address issues such as blade misalignment, gear wear, or low lubrication before they escalate and streamlining operations with automated work orders, inventory management, and EHS compliance. IBM Maximo Renewables is an AI-enabled platform that reduces inefficiencies, optimizes costs, and boosts productivity, making it a game-changer for renewable energy asset management.

AFTERNOON 2 SESSIONS



2:45p-4:00p

Maximo 101 – Compatible Unit Estimating
Tom Press - APS

Purpose: The Maximo 101 Track of presentations is designed for those attendees who are evaluating Maximo and Maximo applications, new to Maximo, or have very little experience with Maximo. These sessions are designed to offer high-level information on Maximo capability, uses for various Maximo modules, what is required to operate in specific Maximo modules, and the value provided by them.

Content: Arizona Public Service (APS) has over 150,000 T&D CU's and embarked on a complete overhaul of our CU Library. We will dive into the strategy of updating our CU structure and how this directly supports the unitization of our company assets and bottom line. An overview of creating an estimate and tying it directly to a work order will be reviewed. This session covers the foundational elements and concepts around CU's, CUE, and Work Orders in Maximo.

Discussion will include:

- Compatible Unit Library and Standards
- CU structure and hierarchy
- Versions, Stations, and Statuses
- Work Order Design Phase, Approvals, Costs, and Actuals
- CUE alignment and access from the work order
- Accounting alignment, PowerPlan integration, In Progress Estimate, As-Built Estimate, Reconciliation, and Unitization of Assets



2:45p-4:00p

Maximo Support - A Day in the Life
Donald (DJ) Mattos - NYPA

Purpose: A strong support model is key to maximizing the business value of Maximo as an enterprise asset management tool. Come prepared for an engaging discussion where we will learn about support models by sharing examples and asking questions.

Content: In this breakout session, NYPA's Asset Information team will provide an overview of how they support Maximo as a product through weekly defect/enhancement calls, collaboration with IT, stakeholder engagement, internal & external training, etc.



2:45p-4:00p

The Basics of Reliability Centered Maintenance
Dylan McNamara - FPL

Purpose: Learn how to begin implementing Reliability Centered Maintenance (RCM) using Maximo to enhance the reliability and operational efficiency in the utilities sector, with a focus on migrating to the Maximo Application Suite.

Content: This presentation will cover the essentials of RCM, the importance of collecting "the right data", setting up RCM in Maximo, and begin planning for the capabilities of Maximo Application Suite for continuous improvement. Attendees will gain practical insights and best practices to effectively manage their RCM programs.

VENDOR NIGHT

5:00p-8:30p

Meet over 35 Maximo product and service Vendors and enjoy an open bar (5:00p) and a full buffet (5:30p). Please participate in the **Scrabble Challenge** & place your vote for **Best Vendor Swag**. How to participate & rules can be found in Guidebook under the 'Link' tab.

Scrabble Challenge - Receive letter tiles from each vendor to create a 'Maximo' word (from the list on Guidebook) with the highest point value for your chance to win a prize during the closing session.

Best Vendor Swag - Use Guidebook to vote for the vendor you think supplied the best giveaway item.

GENERAL SESSIONS

| | |
|--|---|
| <p>7:00a-8:00a</p> | <p>Continental Breakfast</p> |
| <p>8:00a-8:30a</p> <p>George Perry NYPA</p> | <p><u>MUWG Business Information</u></p> <ul style="list-style-type: none"> • Introductions • MUWG Business Updates • Agenda Updates |
| <p>8:30a-9:00a</p> <p>Terry Saunders IBM</p>  | <p><u>Maximo for Renewables</u></p> <p>IBM has acquired Prescinto, a leading provider of asset performance management (APM) software-as-a-service (SaaS) for renewables. Prescinto's capabilities leverage AI to enable advanced monitoring, analytics, and automation to streamline renewable energy operations and manage clean energy and storage assets. This offering now named Maximo Renewables will enhance the capabilities of <u>IBM Maximo Application Suite (MAS)</u>, IBM's solution for asset lifecycle management. Moreover, it will further IBM's leadership in the energy and utility space, an industry undergoing significant transformation and seeking solutions to manage and optimize wind, solar, and other renewable energy storage assets. This session will review capabilities for optimizing and managing renewables and plans to incorporate this offering within the Maximo Application Suite.</p> |
| <p>9:00a-9:30a</p> <p>Dylan Booth GIS Supervisor NTMWD</p>  <p>Tommy Lindquist Enterprise Application Administrator NTMWD</p>  | <p><u>Maximo, BIM and GIS: Driving Innovation in Asset & Facilities Management</u></p> <p>In today's rapidly evolving landscape of asset and facilities management, leveraging integrated technologies is critical for optimizing operations and ensuring future sustainability. This presentation explores the implementation of NTMWD's powerful union between IBM Maximo, Building Information Modeling (BIM), and Geographic Information Systems (GIS) to help enhance your organization's asset lifecycle management. By combining Maximo's enterprise asset management capabilities, BIM's detailed digital models of physical infrastructure, and GIS's spatial analysis, organizations can gain unprecedented insights into asset performance, location-based decision-making, and operational/maintenance efficiency. This session will empower professionals in Facilities Management, Engineering, IT/Enterprise Solutions and Infrastructure Planning with the knowledge to implement these advanced technologies to streamline setup and configuration, explore some lessons learned, and overall reinforce informed asset management strategies for organization operations.</p> |
| <p>9:30a-10:00a</p> <p>Janie Mann CoServ</p> <p>Shelley Cameron NTMWD</p> <p>Destinie Prince ONCOR</p> | <p><u>Utilities in Texas - Using Maximo to Overcome Challenges and Leverage Opportunities</u></p> <p>A conversation with key players in the North Texas utility market - CoServ, NTMWD, and ONCOR - we will discuss the flexibility of Maximo to manage everything that Texas throws at us.</p> |
| <p>10:00a-10:45a</p> | <p>MORNING BREAK NETWORKING & LIGHT REFRESHMENTS PROVIDED</p> |

MORNING SESSIONS



10:45a-12:00p

Installing MAF Configuration and Understanding its Utilities for a Safe Upgrade

Vinicius Santana & Marlon Vicente - IBM

Purpose: The MAF Configuration application can be used by implementers to configure IBM-provided applications (or duplicates of those applications) that are built with the MAF.

Content: In this session we will demonstrate the installation process and utilities/tools that are critical during an upgrade process. Learn the details of the operation and be confident to bring customizations and configurations to the new version. We are also going to show the process for older versions, the changes that are in place of the current version and the next steps and features of the tool.



10:45a-12:00p

From Vegetation Insights to Work Execution: Maximo Vegetation Management

John Bosse & Tiffany Ly - IBM

Purpose: Maximo Vegetation Management – It is time to transition your Vegetation Trimming programs from Cycle-based approaches to Condition-based. Since your Distribution and Transmission assets have a risk of encroaching vegetation, learn how using vegetation insights, derived by IBM AI with remote sensed data can provide a depth of Key Performance Indicators (KPIs) that will help you prioritize your trimming efforts across the entirety of your service area.

Content: Available for over 5 years through IBM's Environmental Intelligence Suite, Vegetation Management is now available as an add-on to Maximo, helping customers identify vegetation risk and schedule & track trimming work – Insights to Execution.



10:45a-12:00p

Cooperative Energy MAS Upgrade

Melissa George - Cooperative Energy

Purpose: Cooperative Energy has embarked on an upgrade to IBM Maximo Application Suite (MAS) to enhance its asset management capabilities and boost operational efficiency. The transition to the latest version of Maximo introduces advanced features for predictive maintenance and asset health monitoring.

Content: This presentation will delve into the technical configurations, strategic decisions, and processes involved in the migration to MAS. Melissa will be assisted by Bennet Tan, Cohesive



10:45a-12:00p

Maximo Mobile - Helping Storeroom and Field Technicians

Vinicius Garmatz - IBM

Purpose: Maximo Mobile is part of the MAS entitlement and offers a set of new capabilities that can help field technicians and storeroom clerk to better perform their daily activities and easily provide important updates back to Maximo.

Content: This session will provide an update on Maximo Mobile, what features and modules are available today for field and storeroom technicians, demoing how storeroom clerks can ensure that the proper spare parts and items are available for field technicians to execute their work orders.



10:45a-12:00p

Inspections: Successes and Methods at Con Edison of New York

Shaun Ramkishun - Con Edison

Purpose: The goal of this presentation is to share the many options and approaches that users can leverage when building inspections and help all improve in this area.

Content: An essential element of any asset management program is inspections. These fall into many categories and purposes. At Con Ed we have been developing these for decades and have learned much along the way. Our inspections occur in various applications, including MAS, and are both mobile and desktop types. We will discuss the various approaches that have worked for us and the reasons for these approaches. Shaun will be assisted by Bob Fyke, Parsons Corporation.

MORNING SESSIONS



10:45a-12:00p

From 7.6.X to Maximo Spatial 9: Transforming Mapping Capabilities
Thiago Geraldi & Thiago lunes - IBM

Purpose: Explore the evolution of Maximo Spatial with a comprehensive comparison between the 7.6.X versions and the powerful new Map Component in Maximo Spatial 9. This session will guide you through the key enhancements and changes that redefine how spatial intelligence supports enterprise asset management. Discover how the latest Map Component delivers improved performance, enhanced user experience, and expanded capabilities. From streamlined workflows to more precise geospatial visualizations, Maximo Spatial 9 takes asset management to the next level. We'll highlight the differences in functionality, usability, and scalability, showcasing how these changes empower users to make more informed decisions and drive operational efficiency.

Content: This session will provide a practical "before and after" analysis, helping you understand the specific improvements and adjustments needed when transitioning from 7.6.X to Maximo Spatial 9. Whether you're planning an upgrade or seeking to maximize the value of your current deployment, this session offers valuable insights and strategies to leverage the full potential of Maximo Spatial 9's advanced mapping capabilities. Join us to learn how to bridge the gap between past and present technologies and unlock the future of spatial intelligence in asset management!



10:45a-12:00p

Maximo 101 – What is a Location?
Wayde Prejean - Kinder Morgan

Purpose: The Maximo 101 Track of presentations is designed for those attendees who are evaluating Maximo and Maximo applications, new to Maximo, or have very little experience with Maximo. These sessions are designed to offer high-level information on Maximo capability, uses for various Maximo modules, what is required to operate in specific Maximo modules, and the value provided by them.

Content: This interactive session will take a high-level look into the Maximo Locations and Assets module concentrating specifically on Locations. Discussion will include various definitions of what a location is, how the Locations and Assets module is organized, what information is needed to properly track location information, and value to the organization. Further discussion will include how location information is tied to other Maximo modules to provide the necessary information to make educated business decisions for improved organizational success.



10:45a-12:00p

Using Maximo HSE as a Safety Information Management System - Part 2: Using Maximo HSE Human Factors Analysis Classification System (HFACS) for Root Cause Analysis
David Milligan - NTMWD

Purpose: The North Texas Municipal Water District (NTMWD) Safety Department provides 6 unique business functions to support water, wastewater, and solid waste services across a 10-county service area. The Safety Department uses Maximo HSE HFACS as part of their incident investigations.

Content: This presentation will provide an overview of the Human Factors Analysis System in Maximo to document human factors root cause analysis.



10:45a-12:00p

Integrated Journey of Operations Management, Inspections and HSE Process in Manage
Francisco Coelho - IBM

Purpose: The purpose of this session is to show the users how commonly siloed process within the company can be handled in an integrated way with the Maximo for HSE industry solution, starting in Operations field, moving to mobile solutions and quality assurance measures.

Content: This presentation will talk about and demonstrate Maximo for HSE and Maximo Mobile products, walking through the operations related functions, moving on to HSE management, quality and inspections mechanisms.

12:00p-1:00p

LUNCH
A plated lunch to promote discussion among attendees.

AFTERNOON 1 SESSIONS



28

1:00p-2:15p

Field Service Management with Maximo – What this means within the Maximo Application Suite
Pedro Spadacini - IBM

Purpose: As part of The User Experience improvements within the Maximo Application Suite, we show how to do Field Service Management using Maximo capabilities and how the connection between Manage, Scheduler, Mobile, Spatial, and Optimizer to deliver the complete Field Service Manager experience at the Maximo Application Suite.

Content: Review the Field Service Manager within Asset Lifecycle Management for strategic deployment within the Maximo Application Suite.



29

1:00p-2:15p

On-the-Go Maintenance: Clarios Implements Mobile Technology
Noah Bender - Clarios

Purpose: In today's fast-paced operational environments, maintenance teams require tools like Maximo Mobile to enhance efficiency, accuracy, and responsiveness. This presentation showcases how mobile technology streamlines maintenance processes, eliminating reliance on desktop computers and enabling seamless work order management.

Content: Technicians, supervisors, and planners can now respond to emergency work orders, perform preventive maintenance, log labor hours, and capture inspection or meter reading data directly from their mobile devices. Instant notifications and accessible work orders allow technicians to start downtime tracking immediately, significantly reducing equipment downtime. Discover how Clarios implemented mobile technology to transform their maintenance operations, achieving measurable improvements in efficiency and performance. Noah will be assisted by Janna Kerr, Maven Asset Management



30

1:00p-2:15p

Maximo Reliability Strategies – What's new in 9.0 and what's coming in 9.1 and beyond
Derek Valine - IBM

Purpose: This session will provide information on Reliability Strategies capabilities available now in version 9.0 as well as the roadmap for version 9.1 and beyond, including the use of Generative AI, providing an understanding of RSL content so that users can quickly leverage the Reliability Strategies application to optimize equipment reliability and increase availability.

Content: Learn how Reliability Strategies:

- Streamlines equipment strategy development and optimization
- Integrates with other applications within the Maximo Application Suite to quickly scale implementation
- Informs when monitoring may replace or reduce time-based maintenance requirements
- Integrates generative AI into reliability processes



31

1:00p-2:15p

Configuring Maximo Mobile Apps and Sharing Best Practices
Vinicius Santana & Marlon Vicente - IBM

Purpose: Why make your technician adapt to a new tool when you can have the tool adapted for them? Change Maximo Mobile to better suit your business needs and reduce acceptance time by making it like what your field labor expects! Moreover, you can do all this without being a mobile developer or an IT expert.

Content: See the main capabilities offered by Maximo Application Framework Configuration Tool and learn to configure and customize Maximo Mobile during our interactive live demo showing how to clone the applications, change Labels and DataSources, enable/disable functionalities, publish new applications, using best practices and more. See you there!



32

1:00p-2:15p

Maximo Supply Chain Update
Thomas Knowles - IBM

Purpose: IBM lead session which provides supply chain user community with Maximo product updates in the supply chain areas (Inventory, Contracts, Purchasing and Invoicing). Validate strategic direction, priorities on enhancements requests and review the RFE Request for Enhancements process to ensure we are bringing the right set of new supply chain features.

Content: The majority of this session will focus on the new Maximo Mobile and Role Based Inventory apps that have been delivered and are being designed and developed in future releases of Maximo. The shared content will be a combination of presentation, concept mockups and live demonstration. We will also dedicate time to point our community members to the current list of RFE and explain how they can help prioritize those requests and submit their own for evaluation.

AFTERNOON 1 SESSIONS



1:00p-2:15p

Optimizing Calibration Management in Energy Utilities with IBM Maximo: Ensuring Compliance and Enhancing Performance
Abhinav Agastya- IBM

Purpose: Calibration management plays a vital role in maintaining the reliability, safety, and compliance of critical infrastructure across electric and gas utilities. Whether ensuring the accuracy of meters and transformers in electric grids or calibrating gas detectors for safety in gas networks, utilities face the challenge of adhering to stringent operational standards while optimizing field efficiency.

Content: This presentation explores how Maximo Mobile enables utilities to meet compliance requirements by automating calibration workflows, tracking “as-found” and “as-left” conditions, and capturing real-time data for audits.



1:00p-2:15p

Maximo 101 - Maximo Screens Can Be Awesome! – Maximo Application Designer Basics & More
Jade Warren - Great River Energy

Purpose: Inspire attendees to leverage application designer and conditional user interface capabilities to support their Maximo-enabled business processes.

Content: This interactive session will demonstrate how Maximo customers can configure Maximo application screens for their business and process needs. We will provide an overview of the Maximo Application Designer, including screen controls, layout considerations, and best practices for screen design. The session will include live Maximo demonstrations of application screen creation, configuration, and the application of conditional screen rules. Additionally, we will demonstrate the new UI configuration capabilities bundled with MAS Manage that allow customer organizations to configure the look-and-feel of their Maximo instances to incorporate branding, organizational preferences, and the aspects of specific business process areas.



1:00p-2:15p

Hands-On Session: Customizing Maps in Maximo Spatial for Mobile and Desktop
Thiago Geraldi & Thiago Lunes - IBM

Purpose: Discover how to configure and customize maps in Maximo Spatial to optimize asset management workflows.

Content: This hands-on session will guide participants through key features such as map layer configuration, symbology adjustments, and integration of spatial data sources. Learn practical steps for creating and managing VTPKs (Vector Tile Packages) and enabling offline functionality on mobile devices. Participants will also explore how to use map events, such as initiating actions like work order creation directly from map interactions. Through live demonstrations, this session will showcase how Maximo Spatial's powerful tools can be adapted to meet specific organizational needs, enhancing spatial visualization and analysis for both mobile and desktop platforms. Join us to gain practical insights and unlock the potential of Maximo Spatial in your operations!



1:00p-2:15p

Administering Users in Maximo Application Suite - Tips and Gotchas
Gur Arora & Scott Wallace - IBM

Purpose: User administration is very important for getting the most out of Maximo Application Suite and it is an area that has some gotchas that knowing how to handle these will make this task easier.

Content: In this session, we will explore the different MAS user types, their configurations, and practical strategies to prevent common user administration issues. We'll address frequent challenges with user synchronization and offer insights on avoiding these pitfalls. Additionally, the session will cover essential topics such as setting up Single Sign-On (SSO) and LDAP, focusing on seamless integration with Manage for effective user registration and management. Lastly, we'll introduce the available APIs for streamlining various administrative tasks, empowering you to efficiently manage user access & configurations.

2:15p-2:45p

AFTERNOON BREAK
NETWORKING & LIGHT REFRESHMENTS
PROVIDED

AFTERNOON 2 SESSIONS



2:45p-4:00p

**Hints and Tips On Moving to Maximo Application Suite SaaS.
Lessons learned by the IBM SRE & SWAT Team**
Gur Arora & Scott Wallace - IBM

Purpose: Since early 2021, the IBM Maximo Application Suite Dedicated offering has been migrating / upgrading clients from the existing Maximo EAM application to Maximo Application Suite.

Content: This presentation will share key lessons learned from the migration and upgrade process to the Maximo Application Suite. We'll cover essential planning steps, critical questions to address, necessary pre-conditions, and the upgrade journey itself. Based on the choices clients make, we'll highlight potential challenges to consider early, helping you avoid complications later in the upgrade process. While each client's journey is unique, there are common themes that apply, no matter your current starting point or path to the Maximo Application Suite.



2:45p-4:00p

**Optimize Your Teamwork Using Scheduler and Maximo Spatial with
ArcGIS Route Service**
Andre Marcelino & Thiago Iunes - IBM

Purpose: Optimize the time between all existing Service Addresses in my Schedule data in order to send to Optimization and return the best-organized order of Technician Route. Maximo Spatial and Scheduler integration can provide this optimization and empower them to optimize asset management workflows through enhanced spatial visualization and analysis.

Content: This session will guide you through the essential steps to unlock the full potential of route optimization. You'll learn how to bring everything together seamlessly, making streamlined workflows and enhanced decision-making a reality.



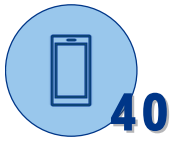
2:45p-4:00p

**Seamlessly Deploying Maximo Application Suite on Red Hat OpenShift:
Insights and Best Practices**
Miryam Kofman, Arif Ali & Anantharaman Subramanian- IBM

Purpose: This presentation is about showing how to successfully deploy the Maximo Application Suite (MAS) on Red Hat OpenShift. The goal is to help the audience understand how this powerful combination works together to create a flexible, secure, and scalable environment for managing enterprise assets. It's about simplifying the process, highlighting the benefits, and sharing insights to make deployments smoother and more effective.

Content: We'll start with a quick introduction to what MAS and OpenShift are and why they make such a great team. Then, we'll dive into the technical architecture, explaining how everything fits together. Next, we'll walk through the deployment process step by step, covering what you need to get started and how to make it happen. We'll also share tips and best practices to optimize performance and ensure security. To make it real, we'll share examples of how others have done it and the lessons they've learned. Finally, we'll wrap up with a Q&A session to answer any questions and provide resources to help you take the next steps. It's designed to be practical, insightful, & something you can immediately apply to your own projects.

AFTERNOON 2 SESSIONS

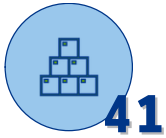


2:45p-4:00p

Leveraging Maximo Mobile, MVI and APM for asset reliability in Water Utilities
John H. Douglas - IBM

Purpose: Even with optimized maintenance schedules, critical assets must be continuously monitored to minimize unplanned downtime.

Content: This session will demonstrate one way to get results from MVI as part of a Maximo Mobile inspection and use those results to enhance health scores in Maximo Health. Combined with other KPIs, the Health score can provide valuable insight into an asset's condition in Water Utilities, ensuring greater reliability and customer satisfaction.



2:45p-4:00p

Maximo 101 - Purchase Request and Purchase Order Applications
Destinie Prince - Oncor & Yewande Marshall - Southern Company

Purpose: Maximo 101 presentations are designed for those attendees who are evaluating Maximo and Maximo applications, new to Maximo, or have very little experience with Maximo. These sessions are designed to offer high-level information on Maximo capability, uses for various Maximo modules, what is required to operate in specific Maximo modules, and the value provided by them.

Content: This interactive session will take a high-level look into the Maximo Purchase Requisition and Purchaser Order applications. Discussions will include various definitions of what the applications are, what they are used for, what information is needed in them, and how to leverage both applications into other areas of Maximo. This session will include demonstrations within Maximo and an interactive question and answer. This will allow businesses to provide the necessary information to make educated business decisions for improved organizational success.



2:45p-4:00p

Empowering Renewable Operations with IBM Maximo Renewables' advanced APM Capabilities (WORKING DEMO)
Kimi Jasuja - IBM

Purpose: The presentation aims to provide the working demo of the various capabilities provided by IBM Maximo Renewables and how it can benefit renewable asset centric organization to centralize data, maintain robust data governance, track and address underperforming assets and provide opportunities for optimization.

Content: In the renewable energy sector, operational efficiency, reliability, and sustainability are paramount for achieving both financial and environmental goals. However, managing complex, distributed assets while maintaining real-time visibility, optimizing performance, and addressing risks remains a significant challenge for asset management leaders.

IBM Maximo Renewables provides a transformative approach to these challenges for Solar, Wind and Battery Energy Storage. This session will demonstrate real-world use cases to showcase how IBM Maximo enables organizations to:

1. Enable Performance Visibility: Leverage fleet views, map views, and one view to gain a holistic understanding of asset performance.
2. Optimize Drone Inspections: perform module health assessment, AI anomaly detection for solar PV modules using object detection and AI
3. Centralize Data and Assess Quality: Utilize data governance features to ensure high-quality data is leveraged for analysis.
4. Track Risks Proactively: Monitor unavailability and reliability risks using advanced alarm management.
5. Address Underperformance: Detect and resolve issues using tools such as Tahoe, string analytics, and turbine prognosis, ensuring optimal asset output.
6. Take Action: Implement corrective measures swiftly

This demonstration highlights how IBM Maximo Renewables helps organizations unlock new efficiencies, reduce unplanned downtime, and achieve sustainability goals by integrating advanced analytics and actionable insights into their operational strategy.

AFTERNOON 2 SESSIONS



2:45p-4:00p

MAS 8 Upgrade at Vistra

DVijay Gumte & Clifton Carpenter - Vistra Corp

Purpose: Vistra recently completed their MAS 8 upgrade. Come to this session to learn how we completed a successful upgrade.

Content: Vistra will present key lessons from their MAS 8 Upgrade and essential planning tips for your organization to consider when implementing MAS.



2:45p-4:00p

Maximo Service Provider - Interactive Learning Session

Sue Brashar & Amanda Huston - LCRA & Thomas Knowles - IBM

Purpose: Maximo Service Provider delivers a suite of applications to manage customer agreements, service delivery, customer billing and supplier contracts. Maximo service Provider supports service as a business. LCRA will be implementing Service Provider as part of their new private LTE offering to customers and would like to hear from other companies currently using or considering using Service Provider. If your company uses Service Provider or you'd like to learn more about the functionality of Service Provider, this breakout is for you.

Content: This will be an interactive session, led by LCRA and IBM to network with other companies currently using Service Provider or planning to implement prior to or after the MAS upgrade. Thomas Knowles with IBM will be available to answer functionality questions. We'd love to hear about how Service Provider works for you, lessons learned, your Service Provider wish list or any pitfalls your organization had during implementation. This is an opportunity to talk with other Service Provider users or come learn what Service Provider is all about and how it can help you manage customer work.



2:45p-4:00p

Ensure Asset Health and Achieve Business Outcomes with Maximo Health

Carlos Ferreira - IBM

Purpose: Address Asset Health and Achieve Business Outcomes with Maximo Health. This session explains how asset owners, reliability and engineers can measure and address asset health degradation before it becomes a costly unscheduled downtime.

Content: Attendees will learn about:

- How to apply APM best practices using the latest new capabilities in MAS Health and Predict
- Identify and correct missing asset data that is needed to measure relative asset health, risk, criticality and mean time between failure
- Identify the best and worst assets by class, system or location using benchmarks/threshold.
- Demonstration of the tooling and capabilities using the latest new version of MAS Health V9.
- The future directions of using Maximo for Condition Based Maintenance

4:00p-4:30p

CLOSING SESSION & REMARKS

Please use Guidebook App to complete the Conference Evaluation to be eligible to win door prizes. Then, make your way the closing session. **Must be present to win door prize!**

TRAINING & CERT PROGRAMS 8:00A-3:00P

ADDITIONAL FEE (\$395) & REGISTRATION REQUIRED
BREAKFAST 7:00A-8:00A | LUNCH 12:00P-1:00P

Maximo Asset Management Training for Managers, Engineers & Supervisors

Instructor: Clay Cook

Planner Scheduler Certification - Level 1

Instructor: Rick Ulrich

Planner Scheduler Certification - Level 2

Instructor: George Perry

Planner Scheduler Certification - Level 3

Instructor: Matt Midas

MAS Supply Chain Overview

Instructor: Amy Tatum

- "Hands On Lab" (bring your laptop) using MAS, including other functionality which is now in MAS such as count books and the Supply Chain Maximo Mobile Applications.

Maximo for Business Process Support & Automation

Instructor: Jade Warren

- This training empowers attendees to leverage Maximo's configuration tools to effectively support key business processes. We will explore capabilities including database configuration, application designer, escalations & scripting, and more. You will gain an understanding of Maximo's ability to automate and support your business processes – you will learn not only WHAT Maximo can do, but also HOW you can leverage those capabilities to enhance your Maximo implementation.

PARTNER MEETINGS 9:00A-11:00A

PRIOR REGISTRATION REQUIRED | MEALS NOT PROVIDED

IBM Maximo Nuclear Power Development

- To attend, please email Derek Valine - derek.valine@ibm.com

IBM Practical Training on Using Maximo Spatial

Enable participants to effectively use Maximo Spatial, covering all stages of integration with ArcGIS. Participants will learn everything from creating a Webmap to synchronizing real-time data, with a strong emphasis on utilizing maps in Maximo Mobile. The course will also introduce the latest features and functionalities of Maximo Spatial, highlighting their value for daily operations.

- For a detailed agenda or to attend, please email Thiago Geraldi - tgeraldi@ibm.com

THANK YOU!



MUWG
MAXIMO UTILITY WORKING GROUP

Revised:
Jan 15 25